

Materials

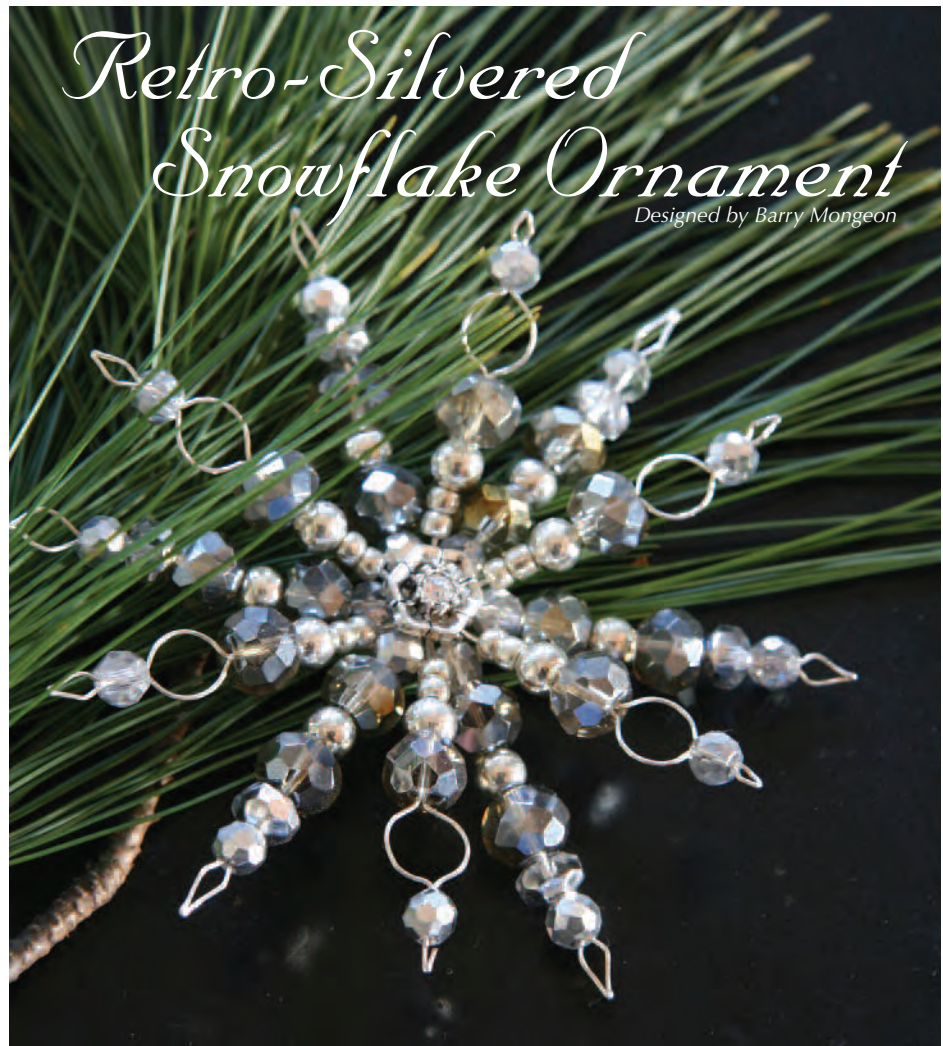
- Flower loom*
 - Silver wire, 24-gauge
 - Mirror, crystal, and silver beads in various sizes
 - Large faceted stones, 1 or 2 (gem only or in a setting)
 - Needle nose pliers
 - Epoxy
- * Available at craft stores and a variety of mail-order sources.

Instructions

1. Follow loom manufacturer's instructions to create base (bottom layer) of snowflake, but only ONE layer of wraps is needed. The manufacturer will suggest several wraps around the pegs—this is when you are working with ribbon or yarn for flowers rather than wire for a snowflake! The finished wire frame will have 12 arms (Fig. 1).

2. Use needle nose pliers to pinch the end of each arm to a point (Fig. 2).

3. Working on one arm at a time, load beads onto the arms of the snowflake. Use your imagination when arranging the beads on the snowflake arms (Fig. 3). Use a mix of large and small beads, and alternate beads of varying shapes and materials—the possibilities are endless. If you decide the arm isn't quite right, slip the beads off and start over. Once the beads are loaded onto the wire, use the pliers to open the wire tip of the arm so the beads won't fall off (Fig. 4). Repeat for the remaining 11 arms.



Design options: Alternate the arms so that there are 6 of one design and 6 of another, alternating small and large beads at the start of the arms. Add openings in the arms to help keep the snowflake light in weight and to create visual interest. To do this, slip a pencil between the two wires, forming

a circle. Add beads before and after the circles (refer to photo).

4. Cover the center of the snowflake with a faceted gem or small piece of jewelry. For a two-sided ornament, add a second gem or piece of jewelry to the other side. Use wire or epoxy to hold these final embellishments in place. ✂

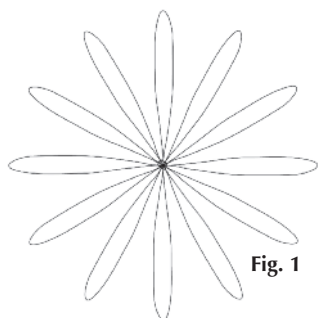


Fig. 1

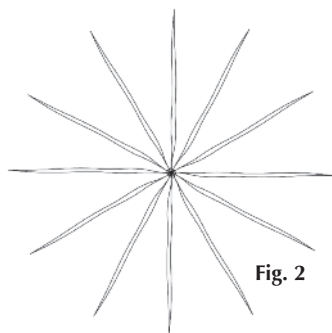


Fig. 2

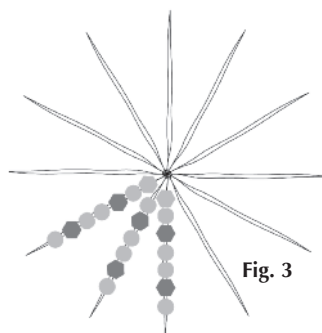


Fig. 3

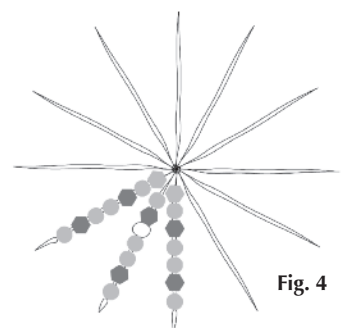


Fig. 4